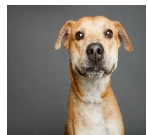




CLEMSON PAW PARTNERS PRICING

(effective March 1, 2023)



DOGS

SPAY/NEUTER

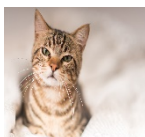
Females	\$100
Females Over 50 lbs	\$125
Males	\$ 75
Males Over 50 lbs	\$100

VACCINATIONS/TESTS

Rabies	\$10
DAPPV	\$15
Leptospirosis	\$10
Bordetella	\$15
Heartworm Test	\$20

PREVENTATIVES

TRI-HEART HEARTWORM (6 mo Supply)	
0-25 lbs	\$26
26-50 lbs	\$32
51-100 lbs	\$38
BRAVECTO (Flea and Tick) (1 chew lasts 3 mo)	
4.4-9.9 lbs	\$55
9.9-22 lbs	\$58
22-44 lbs	\$61
44-88 lbs	\$62
88-123 lbs	\$63
PARA-DEFENSE ADVANCED Monthly Topical kills fleas, ticks, mosquitos, biting fleas and lice	
4 mo supply	\$28



CATS

SPAY/NEUTER

Female	\$65
Male	\$50

VACCINATIONS/TESTS

Rabies	\$10
FVRCP	\$15
FIV/FELV Test	\$30

PREVENTATIVES

BRAVECTO PLUS (topical)	
2 mo supply	\$40
PARA-DEFENSEII Monthly topical that kills fleas, flea eggs	
4 mo supply	\$23



FERALS

SPAY/NEUTER

FERAL CAT PROGRAM (includes spay/neuter, rabies, ear tip)	
Pickens County Residents FREE (must provide proof of residence)	
Other counties	\$50

OTHER SERVICES (CATS & DOGS)

Microchip	\$20
De-wormer (PYRANTEL)	\$ 5
E-Collar	\$ 8
Nail Trim	N/C

ADDITIONAL CHARGES

Additional charges may be incurred if complications arise. You will be contacted about any extra charges before you pick up your pet.